

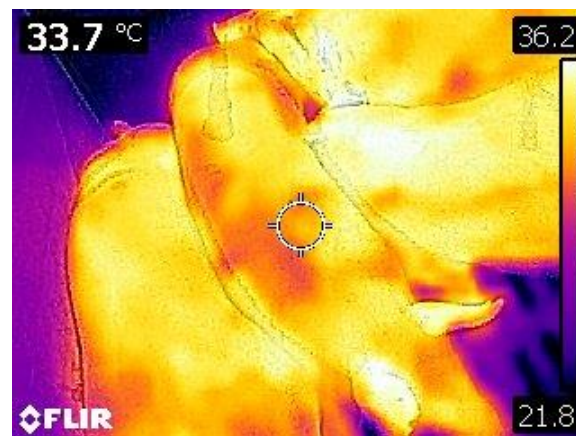


GRADUATE STUDENT ASSISTANTSHIP - Ethology



The Prairie Swine Centre, a non-profit corporation affiliated with the University of Saskatchewan and located near Saskatoon, Saskatchewan, Canada, has an opening for graduate studies in swine ethology (behaviour) at the MSc. level. This project will explore **the use of infrared technologies to measure stress and predict meat quality in pigs.**

Successful applicants will have a B.Sc. in animal science or related discipline. Students at the Prairie Swine Centre are enrolled in the College of Graduate Studies and Research at the University of Saskatchewan. The successful applicant will have strong organizational, communication and interpersonal skills, and be able to contribute effectively as a member of a research team. Competitive financial assistance is available in the form of a stipend (Graduate Research Assistantship).



The Prairie Swine Centre represents a unique approach to research and technology transfer, maintaining a strong focus on applied research related to the pork industry, while emphasising academic quality. Active in research, education and technology transfer, the Centre operates a 350 sow farrow-to-finish commercial research herd with extensive surgery, metabolism and intensive research facilities (see www.prairieswine.com for more information). The Ethology research team is part of a broader research program at the Centre that includes research in swine nutrition and engineering.

Interested applicants should contact Dr. Jennifer Brown, Prairie Swine Centre Inc., P.O. Box 21057, 2105 - 8th Street East, Saskatoon, Saskatchewan, CANADA S7H 5N9 [Phone (306) 667-7442; e-mail jennifer.brown@usask.ca].